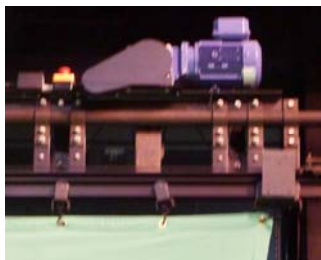


Draw Curtain Machine OT

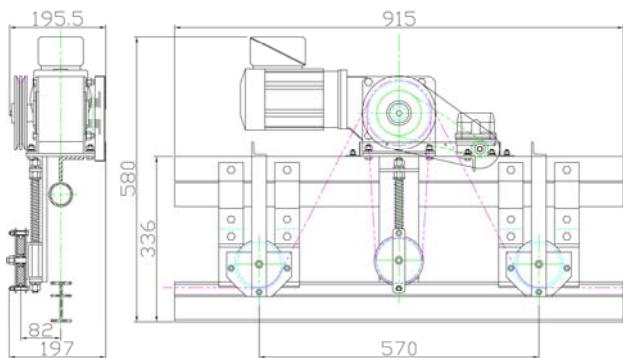
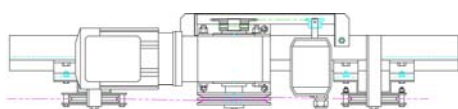
Macho DCMOT5	Draw Curtain Machine (on Track 500 series) c/w (1) control station
Macho DCMOT4	Draw Curtain Machine (on Track 400 series) c/w (1) control station
Macho DCMOT3	Draw Curtain Machine (on Track 300 series) c/w (1) control station



Our new Macho series member, Macho Draw Curtain Machine – on Track type, provides the automatic control for the Front curtain in most stages. It can be installed on curtain track to save space and operate bi-parting curtain system up to 30m wide. It employs highly reliable, compact and efficient Japanese motor. Once installed, it requires no maintenance for years.



DCMOT5



Operation Data

Curtain Track	Suitable for bi-parting, straight curtain track only. (e.g. H&H 300, 400 or 500 series)
Cable Speed	0.45 m/sec
Control Station	Open, Stop and Close Button; when Open / Close button is pressed, motor runs latched until limit switch reached or Stop button pushed. (one station supplied together with machine.)
Electrical connection	At motor control box and connected to the terminals inside.

Mechanical Data

Drive Pulley	Ø150mm cast iron drive pulley with double V-groove, with spring-loaded ball bearing idler to maintain cable tensions
Structure	Machine secured to fabricated steel base designed to attach onto Ø48.3mm pipe batten Two Ø 100mm ball bearing pulleys to align operating cable with curtain track
Output Torque	105 Nm
Gear Reducer	1:25 Single reduction hypnotic gear for continuous duty
Drawing Rope	Ø 5mm steel wire rope

Electrical Data

Gear Motor	0.75kW, 1:25 gear, 380V 3 phase 50Hz
Main and Control input	380V 3 phases 50Hz via 4 x 1.5mm ² + GND (power) 3 x 1mm ² 24VDC (for control station)
Safety Switch	Adjustable mechanical open and close limit switch
Motor control box	With 3 phases isolator, contactor overload protection, mechanical and electrical interlocks, 24VDC control circuit, local push button control and E-stop

Installation Data

Mounting method	Attach onto Ø48mm pipe batten above curtain track
Alignment	To be centre aligned with curtain track

Environmental Data

Operation humidity	5-95% non-condensing
Operation temperature	0-40°C (32-104°F)

Ordering Information

Model	Ordering No.
DCMOT5	TG30
DCMOT4	TG40
DCMOT3	TG50

Macostar reserves the right to change the specification without prior notice.
Macostar International Ltd: Macho-drawcmOT -DATA -V1.1 – 25 Jul 2012