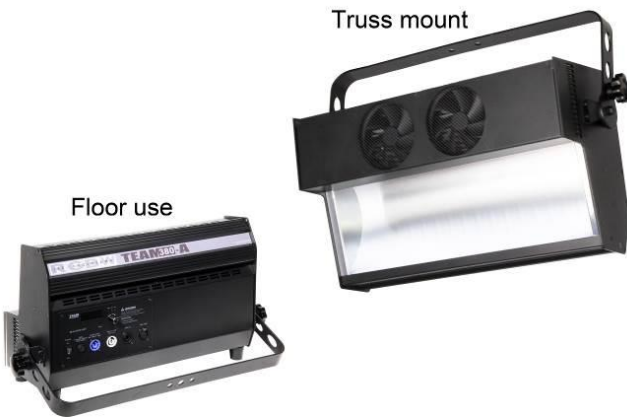


MacoLEDs TEAM380 Cyclorama Light

MacoLEDs TEAM380-A : 350Watt, 6,000K Cyclorama light

TEAM380-A is a LED cyclorama light is designed for TV studios and theatres. It is powerful, energy-saving and able to change colours smoothly through DMX controls. The TEAM380-A can be dimmed smoothly from 0 to 100% like the other MacoLEDs. It produces a soft and even field of asymmetrical light in a choice of RGBW (for a backdrop of kaleidoscopic colour mixes) or pure white (for a clean chroma-key wash). Available as a single unit, TEAM380-A can be easily daisy chained through 4 units side by side providing greater saturation of light. The cyclorama light has a simple and intuitive local control panel for setup, control and addressing, and is RDM ready.



Application

Beam style	Asymmetric flood
Typical throw distance	2 - 8 meters
Suitable for	Theatre, TV studio

Mechanical Data

Construction	Extruded aluminum alloy and steel plates to form light weight and rigid fixture construction.
Paint / finish	Epoxy-polyester powder paint
Mounting & suspension	steel stirrup with 12mm centre hole + DIN mounting
Floor use	Four plastic feet at fixture bottom
Safety bond	Included

Electrical Data

Power input	100~240VAC single phase
Frequency/Current	50/60Hz - 1.5A@220V
Power consumption	350W at full power, 5W in sleep mode
Power Input	PowerCon , Locking 3 pole connector, Blue
Power Output	PowerCon , Locking 3 pole connector, White
Power loss	Last Scene Hold
Cable	2m, 3 x 1.5mm ² flexible cable to bare ends
Standard compliance	EN60598-2-17, CE marked, ETL listed

Operational Data

Working position	0° - 180°, suitable for truss mount and floor use
Signal input/output	XLR 5-pin male/female connectors, USITT DMX-512A
Control modes	RGBW / HSI / CCT / Effects
DMX channel nos.	4(RGBW); 3(HSI); 2(CCT mode); 2(Effect mode)
Input DMX signal loss	Last scene hold
RDM	ANSI E1.20-2006 RDM
Dimming range	0 -100%
LED temperature	Built-in sensor real time monitoring
Cooling	Dual cooling fan, automatic control
LED lifetime	≥ 20,000 hr @25°C max.

Optic & Effect

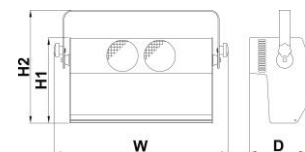
Light source	128 high power CREE LEDs (RGBW)
Beam angle	54° horizontal, 80° vertical, fixed angle
Beam performance ratio	3.33:1
Distance to cyclorama	1.5m ~ 2.5m
Colour control modes	RGBW; HSI (Hue, Saturation, Intensity); CCT (colour temperature adjusting); Effect (Built-in colour macros)

Environmental Data

Operation humidity	5-95% non-condensing
Operation temperature	0-35°C (32-104°F)
Installation place	Indoor
Noise level	≤ 35dB @1m

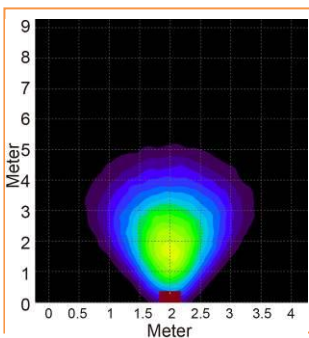
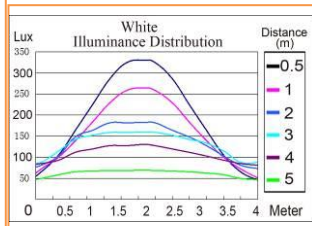
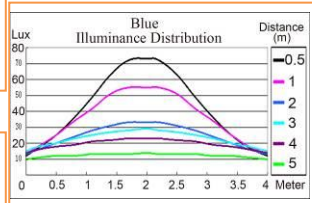
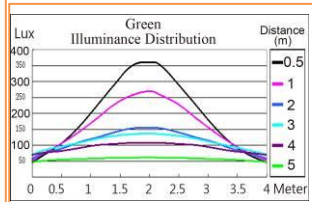
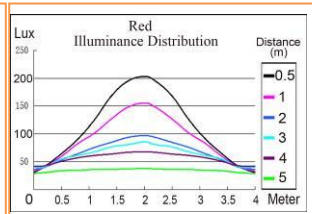
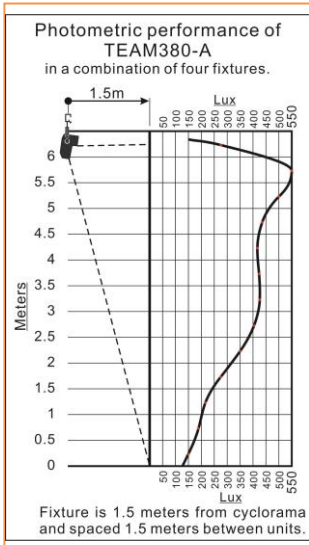
Physical Data

Model	TEAM380-A
Weight	12.6 kg
Size (mm)	W / H1 / H2 / D 630/308/408/208



Ordering Information

Model	Ordering code	Packing size (cm)
TEAM380-A (6,000K)	F6G0	70*43*40



Model	Distance to Cyc	Total Lumens on 5m(H)x4m(W) Cyc	Projection Angle
TEAM380-A	1.5m	4,630	73°

Macostar reserves the right to change the specification without prior notice.
Ref.: MacoLEDs-Team380-A -V1.3b / 25 Oct 2017

Effects: Built-in colour macros (Lee Filters codes for reference only)

DMX	Colour	Code	DMX	Colour	Code	DMX	Colour	Code	DMX	Colour	Code
1	0-15	clear (3200K)	130	5	64-79	chrome orange	179	9	128-143	bright red	26
2	16-31	pale gold	152	6	80-95	bright pink	128	10	144-159	rose purple	48
3	32-47	straw	103	7	96-111	flesh pink	192	11	160-175	mauve	126
4	48-63	loving amber	176	8	112-127	magenta	113	12	176-191	moss green	89
								13	192-207	dark green	124
								14	208-223	full CT blue	201
								15	224-239	peacock blue	115
								16	240-255	dark blue	119