

Aluminum Extruded Bar Clamps

- BC-250 Aluminum Bar Clamps (pair)
- BC-250SD Aluminum Bar Clamps (2 pairs) with straight junction plate
- BC-250WS Aluminum Bar Clamps (1 pair) with lighting batten junction plates
- BC-250WD Aluminum Bar Clamps (2 pairs) with lighting batten junction plates

GB/T228-2002



The Medley Bar Clamps are well-designed to satisfy different needs of bars settings on stage and theatre. The clamps are designed to fit bars with diameters from 48 to 51mm and are constructed from high tensile aluminum extrusions. One end of the Medley Bar Clamps provide an open slot of 4mm wide to fasten metal junction plates to build various types of hanging systems to suit most applications such as lighting battens, scenery bars, signs as well as audio systems.



Mechanical Data

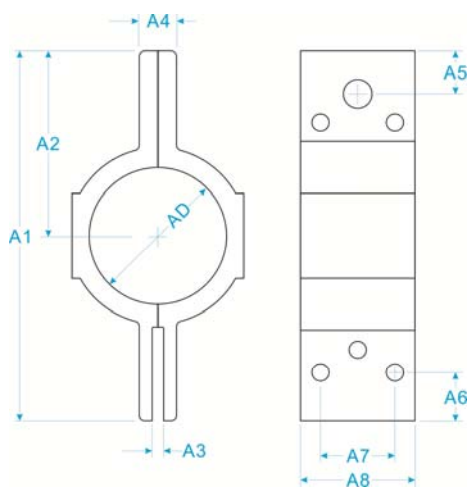
SWL	250Kg
Material	High tensile aluminum
Finish	Anodized black
Hole dia. for shackle	10mm
Holes dia. for fastening clamps	6mm
Slot width for junction	4mm
Fastening	M6x25 black hexagon socket head bolts & nuts (4 sets, included)

SWL is based on 6:1 safety factor

Physical Data

AD	48-51mm, variable
A1	130mm
A2	65mm
A3	4mm, minimum width
A4	13mm, variable, depends on diameter of bar clamped
A5	15mm
A6	17mm
A7	26mm
A8	40mm

BC-250
Dimension Dwg

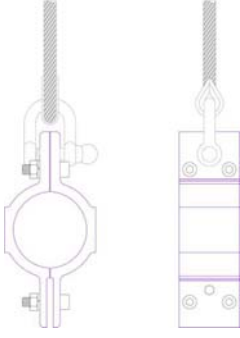
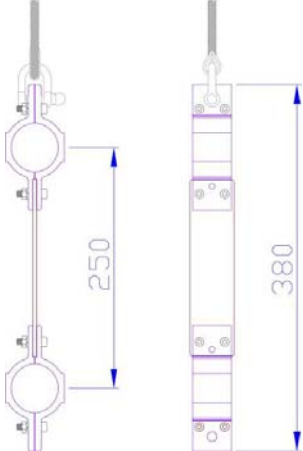
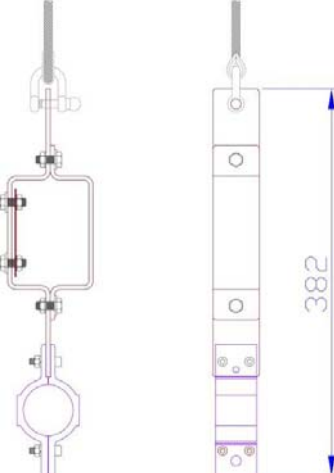
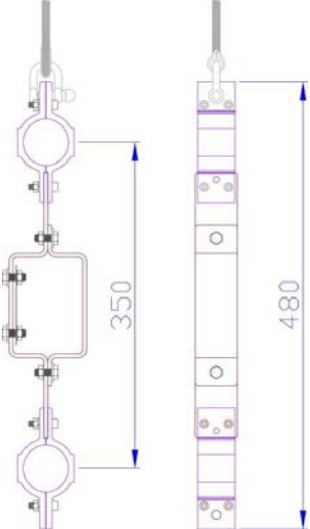






BC-250 Suitable Barrel: Dia
48-51mm



*shackle & thimble not included

Bars clamps Assemblies

BC-250	BC-250SD	BC-250WS	BC-250WD
			
			

Ordering Information

Model	Ordering number
BC-250	
BC-250SD	
BC-250WS	
BC-250WD	

Macostar reserves the right to change the specification without prior notice.
Macostar International Ltd. Medley-barclamp - DATA - V1.1 - 02 sept 2011